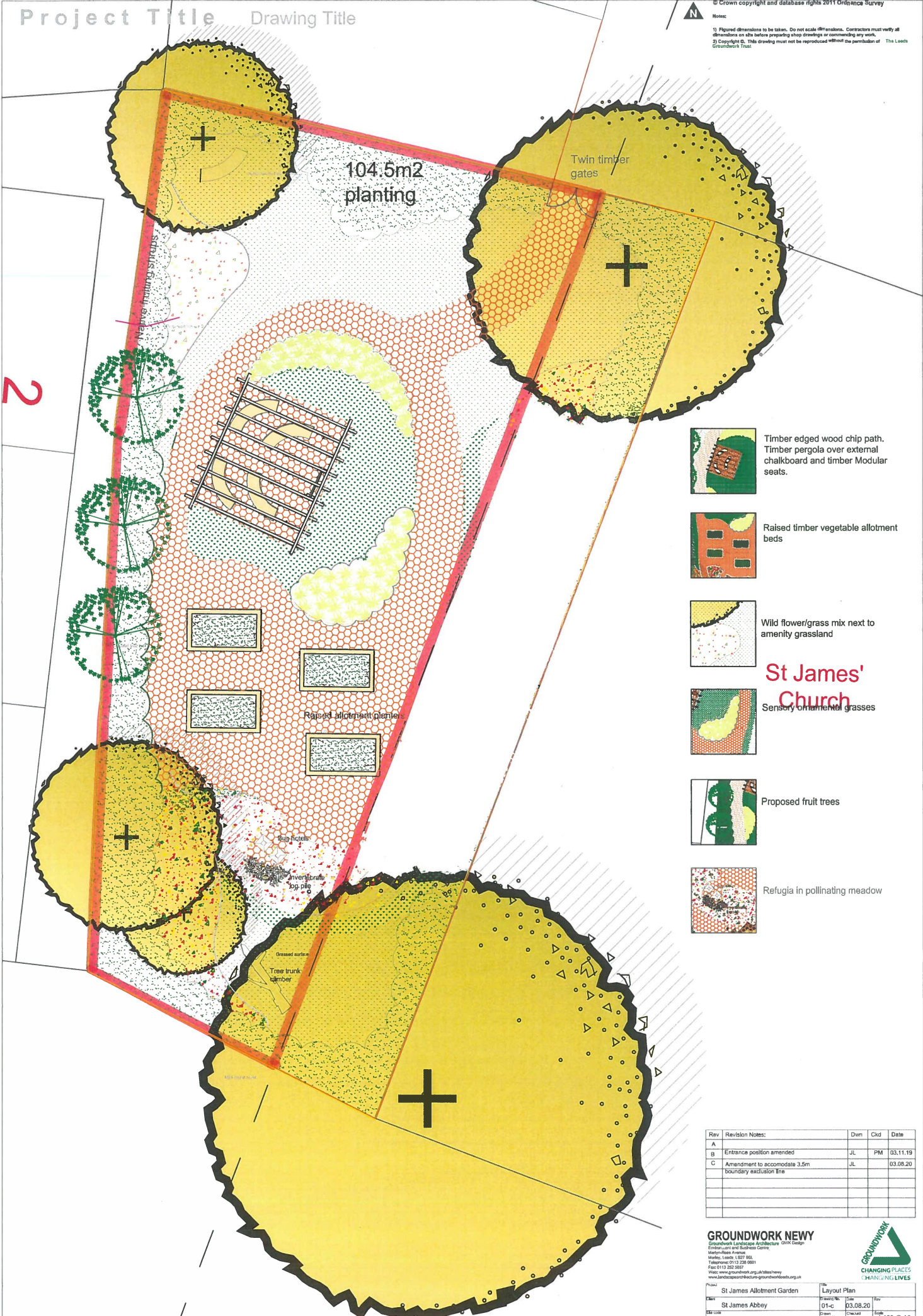


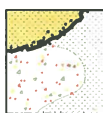





2



-  Timber edged wood chip path. Timber pergola over external chalkboard and timber Modular seats.
-  Raised timber vegetable allotment beds
-  Wild flower/grass mix next to amenity grassland
-  Sensory ornamental grasses
-  Proposed fruit trees
-  Refugia in pollinating meadow

St James' Church

Rev	Revision Notes	Drawn	Chk'd	Date
A		JL	PM	03.11.19
B	Entrance position amended	JL	PM	03.11.19
C	Amendment to accommodate 3.5m boundary exclusion line	JL		03.08.20

GROUNDWORK NEW
 Specialist Landscape Architects, OHS Design, Environment and Business Centre, Mariner Road, Wakefield, Leeds LS2 7SL, Telephone 0113 258 0001, Fax 0113 258 2007, www.leedsgroundwork.org.uk/files/newy, www.leedsgroundwork.org.uk/files/newy



Project	St James Allotment Garden	File	Layout Plan
Client	St James Abbey	Drawn	03.08.20
Site Code		Drawn	JL
		Scale	1:100 @ A3